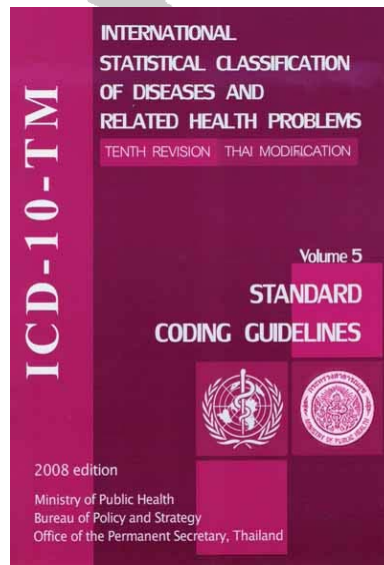


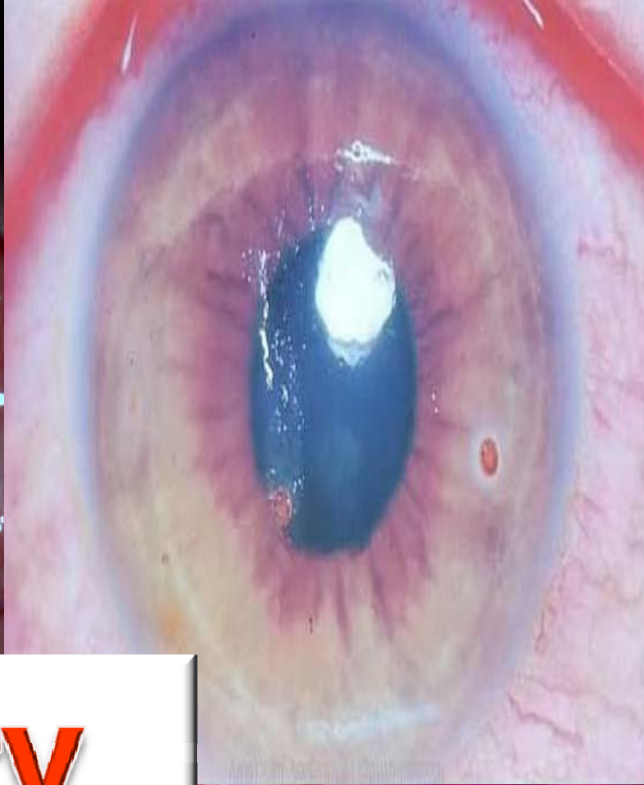
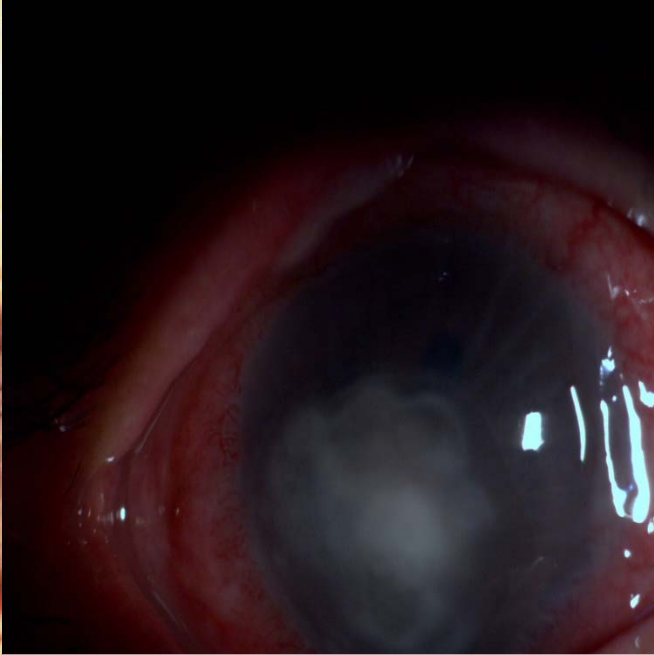


สถาบันสุขภาพเด็กแห่งชาติมหาราชินี

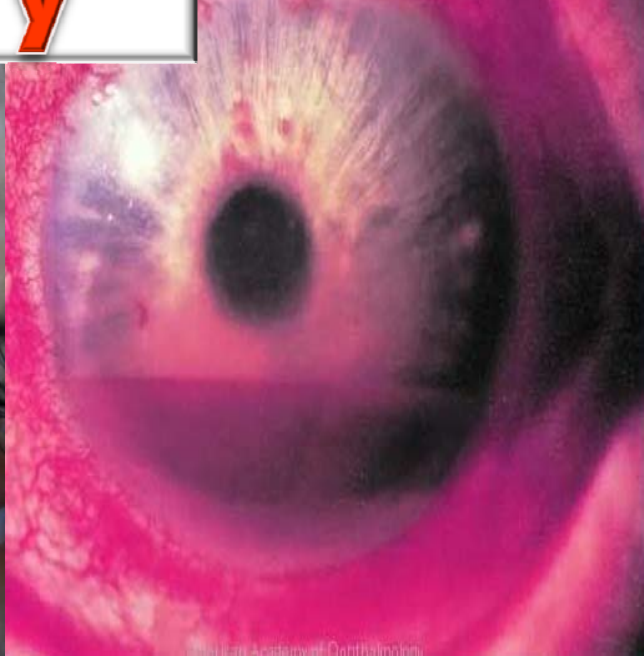
พ.ญ. ขวัญใจ วงศกิตติรักษ์
กลุ่มงานจักษุวิทยา

Eye Coding Guideline





Eye injury



Injury of eyelid and periocular area

- S00.1** **Contusion of eyelid and periocular area**
Black eye **Traumatic black eye**
- Excludes:* contusion of eyeball and orbital tissues (S05.1)
- S00.2** **Other superficial injuries of eyelid and periocular area**
Excludes: superficial injury of conjunctiva and cornea (S05.0)
- S01.1** **Open wound of eyelid and periocular area**
Open wound of eyelid and periocular area with or without involvement of lacrimal passages

Superficial injury including:

abrasion
blister (nonthermal)
contusion, including bruise and haematoma
injury from superficial foreign body (splinter)
insect bite (nonvenomous)

Open wound including:

animal bite
cut
laceration
puncture wound:
• NOS
• with (penetrating) foreign body

Injury of eye and orbit

Excludes: injury of:

- oculomotor [3rd] nerve (S04.1)
- optic [2nd] nerve (S04.0)

open wound of eyelid and periocular area (S01.1)

orbital bone fracture (S02.1, S02.3, S02.8)

superficial injury of eyelid (S00.1-S00.2)

Injury of cranial nerve**Superficial injury of eye and orbit****S05.0 Injury of conjunctiva and corneal abrasion without mention of foreign body**

Excludes: foreign body in:

- conjunctival sac (T15.1)
- cornea (T15.0)

S05.1 Contusion of eyeball and orbital tissues

Traumatic hyphaema

Excludes: black eye (S00.1)
contusion of eyelid and periocular area (S00.1)

Foreign body on external eye

ต้องระบุตำแหน่งของ FB

T15

Foreign body on external eye

Excludes: foreign body in penetrating wound of:

- orbit and eyeball (S05.4-S05.5)
 - retained (old) (H05.5, H44.6-H44.7)
- retained foreign body in eyelid (H02.8)

T15.0

Foreign body in cornea

T15.1

Foreign body in conjunctival sac

T15.8

Foreign body in other and multiple parts of external eye

Foreign body in lacrimal punctum

T15.9

Foreign body on external eye, part unspecified

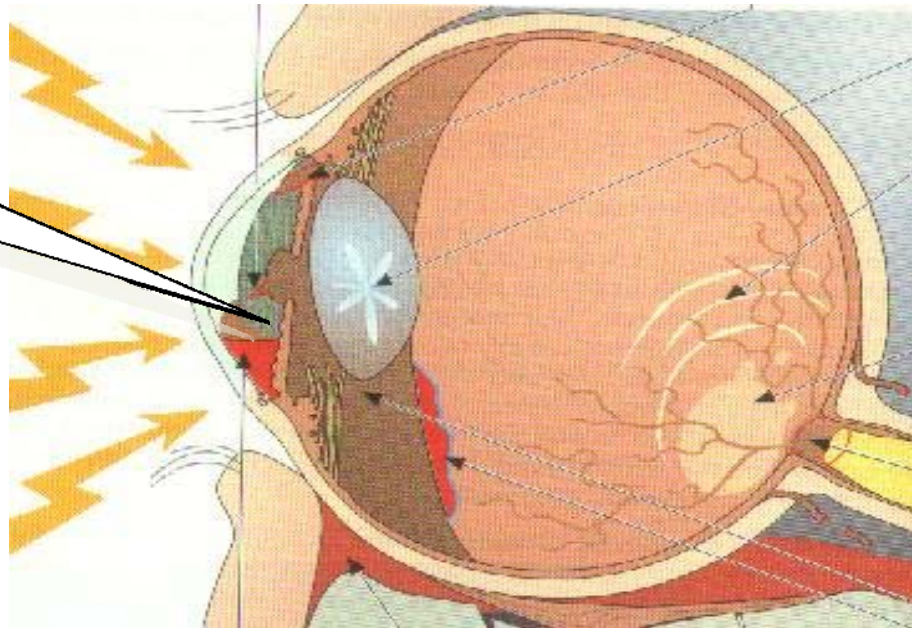
- ถูกต่อยที่ตาขวา ขณะดูการแสดงดนตรี มีเลือดออกในตาขวา

- H21.0 Hyphema
- S05.1 Traumatic hyphema

PDx S05.1 Traumatic hyphema

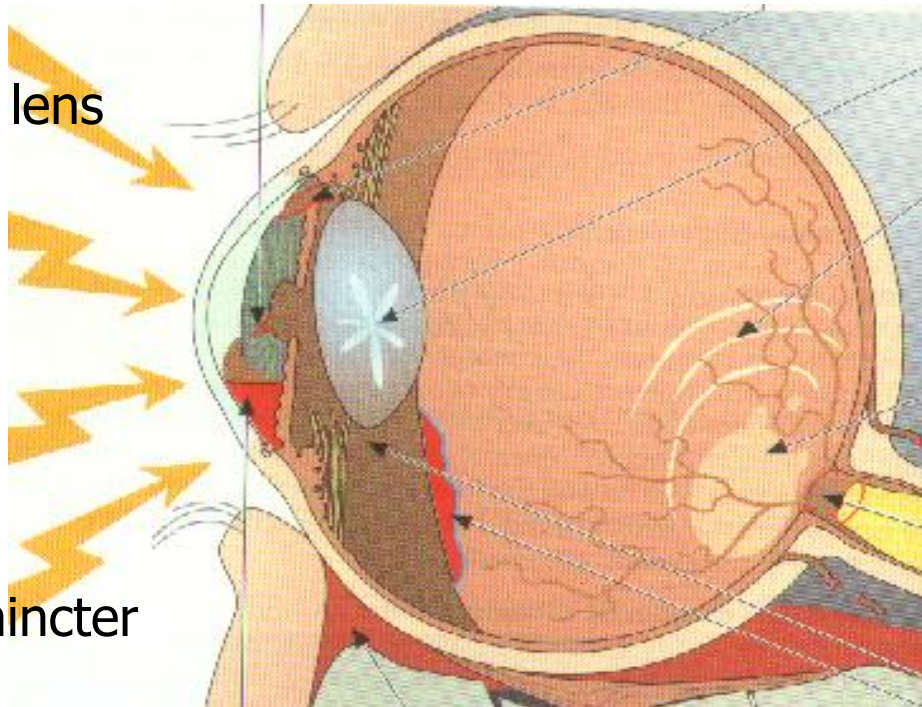
Ext. Y04.21 Assault by bodily force, music hall, entertain activity

Hyphema



PDx	S05.1	Contusion of eyeball and orbital tissue Traumatic hyphema
	Or H26.1	Traumatic cataract/Traumatic ruptured lens
	Or S05.8	Other injuries of eye and orbit
SDx	
Ext.	Y04.21	Assault by bodily force, music hall, entertain activity

Traumatic ruptured lens



Dislocation of lens

Hyphema

Iridodialysis

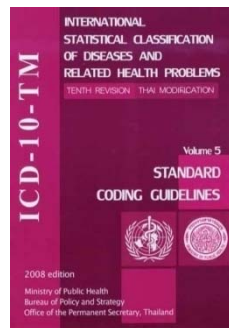
Tear of iris sphincter

Traumatic cataract

Retinal edema

Retinal hemorrhage

Retinal dialysis



ในผู้ป่วยได้รับอุบัติเหตุที่ตา มีหลักการให้รหัสดังนี้

1. ให้รหัสในกลุ่มอักษร S หรือ T โดยเลือกตามลักษณะของรอยโรคที่ตา
2. ตามด้วยรหัส external cause injury ในกลุ่มอักษร V, W หรือ X เพื่อบอกถึงสาเหตุของอุบัติเหตุ
3. หากรหัสในกลุ่มอักษร S หรือ T ไม่บ่งรอยโรคที่ตาได้ชัดเจน ให้เติมรหัสในกลุ่มอักษร H ไปด้วย
4. หากเป็นโรคทางตาที่เป็นผลตามหลังจากอุบัติเหตุ (sequelae of injury) ให้ใส่รหัส **T90.4 Sequelae of injury of eye and orbit** ตามหลังด้วย

PDx	S05.8	Other injuries of eye and orbit
SDx	H27.1	Dislocation of lens
	or H35.6	Retinal haemorrhage
	or H35.8	Macular edma
	or H43.1	Vitreous haemorrhage

Open wound of eye and orbit

S05.2 Ocular laceration and rupture with prolapse or loss of intraocular tissue (Inside-out)

S05.3 Ocular laceration without prolapse or loss of intraocular tissue
Laceration of eye NOS

S05.4 Penetrating wound of orbit with or without foreign body retained (old) foreign body following penetrating wound of orbit (H05.5)
Full-thickness wound by sharp object (outside-in)

S05.5 Penetrating wound of eyeball with foreign body retained (old) intraocular foreign body (H44.6-H44.7)

S05.6 Penetrating wound of eyeball without foreign body retained (old) intraocular foreign body (H44.6-H44.7)
Ocular penetration NOS
EOM laceration

S05.7 Avulsion of eye
Traumatic enucleation
Include Perforating by sharp object/missile

S05.8 Other injuries of eye and orbit
Lacrimal duct injury

S05.9 Injury of eye and orbit, unspecified
Injury of eye NOS

Burn and corrosion of eye and adnexa

T26

Burn and corrosion confined to eye and adnexa

- T26.0 Burn of eyelid and periocular area
- T26.1 Burn of cornea and conjunctival sac
- T26.2 Burn with resulting rupture and destruction of eyeball
- T26.3 Burn of other parts of eye and adnexa
- T26.4 Burn of eye and adnexa, part unspecified

Thermal injury

- T26.5 Corrosion of eyelid and periocular area
- T26.6 Corrosion of cornea and conjunctival sac
- T26.7 Corrosion with resulting rupture and destruction of eyeball
- T26.8 Corrosion of other parts of eye and adnexa
- T26.9 Corrosion of eye and adnexa, part unspecified

Chemical injury

Fracture of orbit

S02

Fracture of skull and facial bones

S02.1

Fracture of base of skull

Fossa:

- anterior
- middle
- posterior

Occiput

Orbital roof

Sinus:

- ethmoid
- frontal

Sphenoid

Temporal bone

S02.3

Fracture of orbital floor

S02.8

Fractures of other skull and facial bones

Alveolus

Orbit NOS

Palate

Complication of injury

T79

Certain early complications of trauma, not elsewhere classified

Excludes: complications of surgical and medical care NEC (T80-T88)

T79.0

Air embolism (traumatic)

Excludes: air embolism complicating:

- abortion or ectopic or molar pregnancy (O00-O07, O08.2)
- pregnancy, childbirth and the puerperium (O88.0)

T79.1

Fat embolism (traumatic)

Excludes: fat embolism complicating:

- abortion or ectopic or molar pregnancy (O00-O07, O08.2)
- pregnancy, childbirth and the puerperium (O88.8)

T79.2

Traumatic secondary and recurrent haemorrhage

T79.3

Post-traumatic wound infection, not elsewhere classified

Use additional code (B95-B97), if desired, to identify infectious agent.

T79.4

Traumatic shock

Shock (immediate)(delayed) following injury

Current injury vs Old injury

Code as new injury

A CURRENT INJURY is one for which the repair is progressing or has yet to be completed. The MRDx should remain as the current injury code on subsequent admissions for treatment of the original injury. Subsequent admissions for a multi-staged intervention would be coded to the current injury code.

Code as FU care or post-procedural disorder

AN OLD INJURY is one in which the repair has been completed. However, following the repair, functionality has failed to return and thus continuing treatment is required.

Procedures for eye injury



- 08.81 Linear repair of laceration of eyelid or eyebrow
- 08.82 Repair of laceration involving lid margin, partial-thickness
- 08.83 Other repair of laceration of eyelid, partial-thickness
- 08.84 Repair of laceration involving lid margin, full-thickness
- 08.85 Other repair of laceration of eyelid, full-thickness
- 08.86 Lower eyelid rhytidectomy
- 08.87 Upper eyelid rhytidectomy
- 08.89 Other eyelid repair

Not involve lid margin

Blepharoplasty

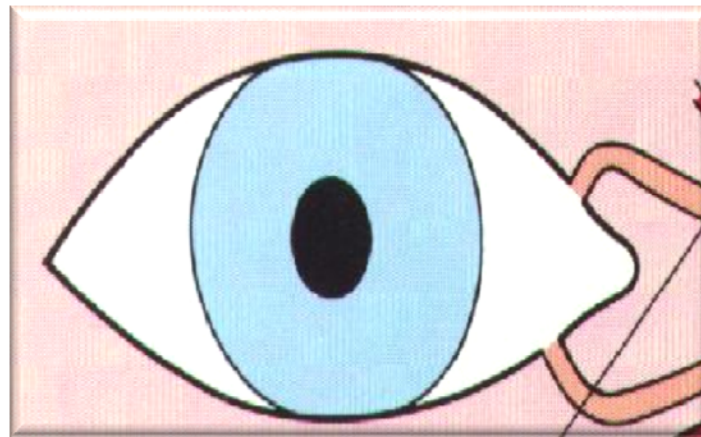
09.7 Repair of canaliculus and punctum

Excludes: repair of eyelid ([08.81-08.89](#))

09.71 Correction of everted punctum

09.72 Other repair of punctum

09.73 Repair of canaliculus



Repair of eyeball/orbit

11.5 Repair of cornea

11.51 Suture of corneal laceration

11.52 Repair of postoperative wound dehiscence of cornea

11.53 Repair of corneal laceration or wound with conjunctival flap

11.59 Other repair of cornea

12.81 Suture of laceration of sclera

Suture of sclera with synchronous repair of conjunctiva

15.7 Repair of injury of extraocular muscle

Freeing of entrapped extraocular muscle

Lysis of adhesions of extraocular muscle

Repair of laceration of extraocular muscle, tendon, or Tenon's capsule

16.8 Repair of injury of eyeball and orbit

16.81 Repair of wound of orbit

Excludes: reduction of orbital fracture ([76.78-76.79](#))

repair of extraocular muscles ([15.7](#))

16.82 Repair of rupture of eyeball

Repair of multiple structures of eye

Excludes: repair of laceration of:

cornea ([11.51-11.59](#))

sclera ([12.81](#))

16.89 Other repair of injury of eyeball or orbit

Repair of orbital fracture

76.7 Reduction of facial fracture

Includes: internal fixation

Code also any synchronous:

bone graft ([76.91](#))

synthetic implant ([76.92](#))

Excludes: that of nasal bones ([21.71-21.72](#))

76.78 Other closed reduction of facial fracture

Closed reduction of orbital fracture

Excludes: nasal bone ([21.71](#))

76.79 Other open reduction of facial fracture

Open reduction of orbit rim or wall

Excludes: nasal bone ([21.72](#))

76.92 Insertion of synthetic implant in facial bone

Alloplastic implant to facial bone